

# CATERINA

PAOLO DI SABATINO

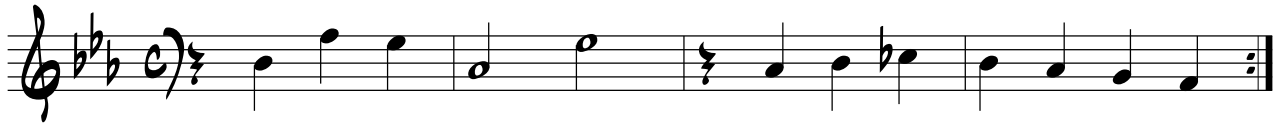
**A**

E $\flat$  $\Delta$

A $\flat$ /E $\flat$

A $\flat$ o/E $\flat$

∕∕



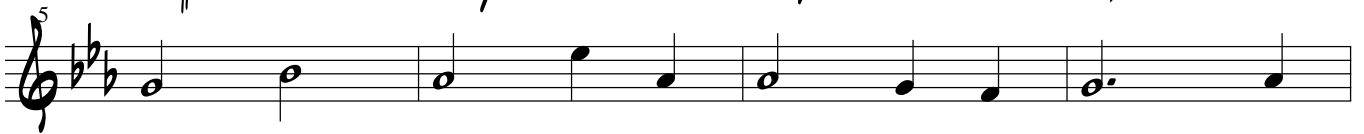
**B**

C $\sharp$ o

F-/C

G7/B

B $\flat$ o

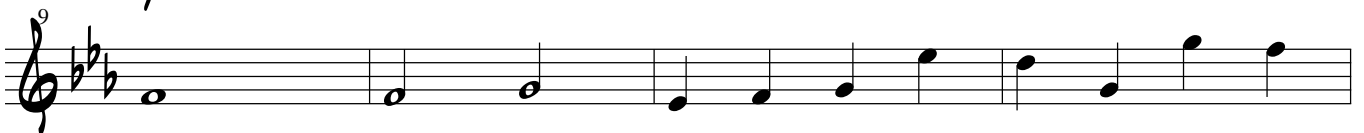


F/A

G7

C-

B $\flat$ o



C/B $\flat$

F/A

C/G

A $\flat$ o



A-

B $\emptyset$

E7(b9)

A-

G-

C7



E $\flat$  $\Delta$

A $\flat$ /E $\flat$

A $\flat$ o/E $\flat$

∕∕



**C**

A $\emptyset$

G/B

TO ENO **D** B $\flat$ SUS

∕∕



ENO

C $\Delta$

F-/C

∕∕

C $\Delta$

